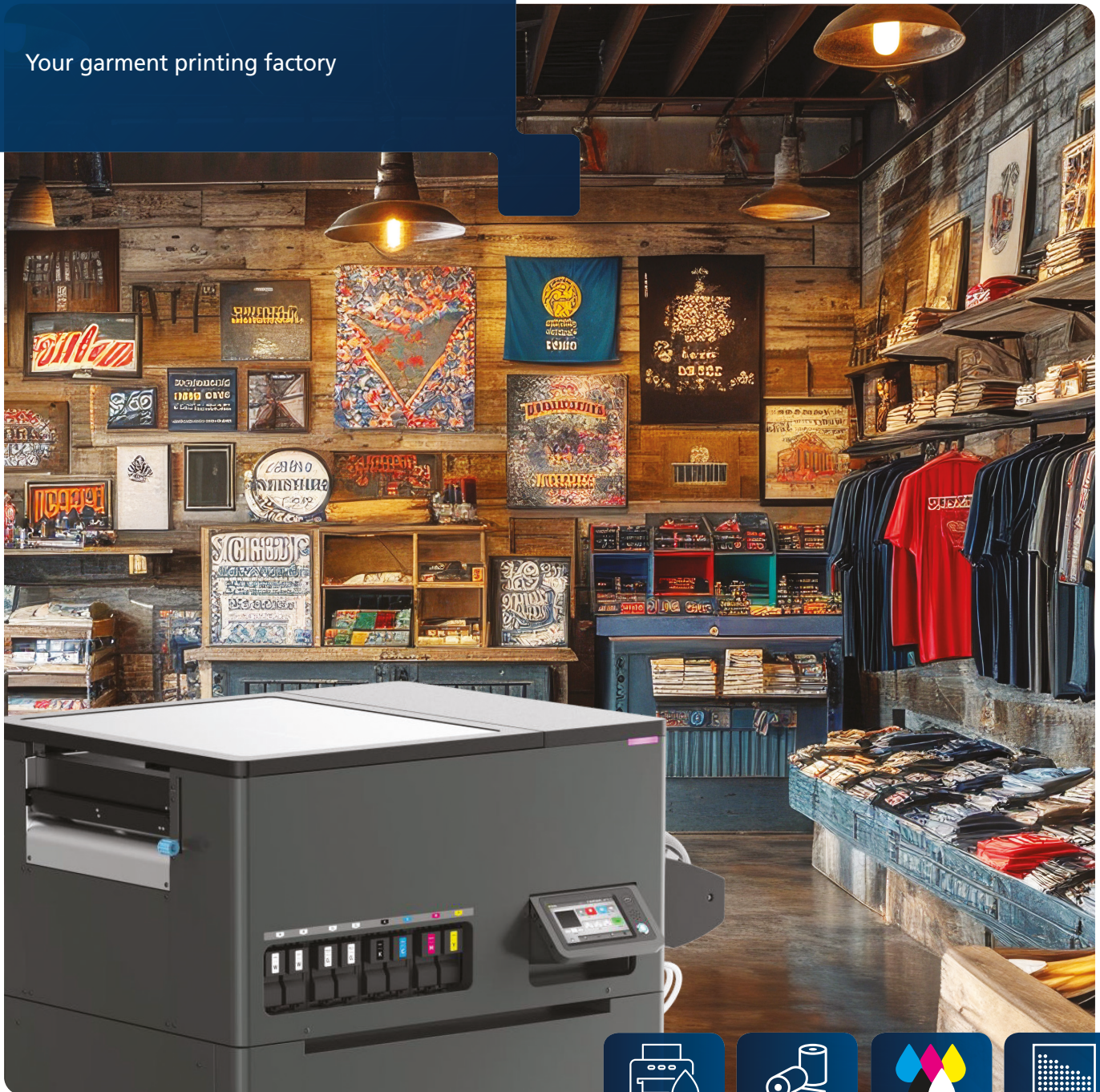


Direct-to-Film Printer

RICOH
imagine. change.

XTF D430

Your garment printing factory



Inkjet
Printer



Direct-to-
Film



CMYK
+ White



1,200 x 1,200
DPI



Coloured
T-shirts



Hoodies
& Sweaters



Backpacks
& Totes

A smarter way to print garments.

Introducing the XTF D430—your gateway to effortless garment printing. This state-of-the-art inkjet printer redefines direct-to-film technology with its high-resolution output and seamless operation. Ideal for both startups and established businesses, the XTF D430 delivers exceptional print quality and efficiency in a compact, user-friendly package.

Everything you need to succeed.

It's easy to go from inspired design to beautifully finished garments with an end-to-end solution built around the XTF D430. With the optional ColorGATE Textile Productionserver and compact powder shaker, you have everything you need to design, print, and apply images—straight out of the box.

The XTF D430

Vibrant prints on a wide array of garments.

Produce vibrant t-shirts, hoodies, tote bags, and more with the XTF D430. The direct-to-film technology delivers fast, high-quality results across a wide range of fabrics. The advanced CMYK + white print process ensures your designs stand out on any colour. Eco-friendly, textile inks create rich, wash-resistant graphics with a soft finish, ideal for fashion and promotional garments.



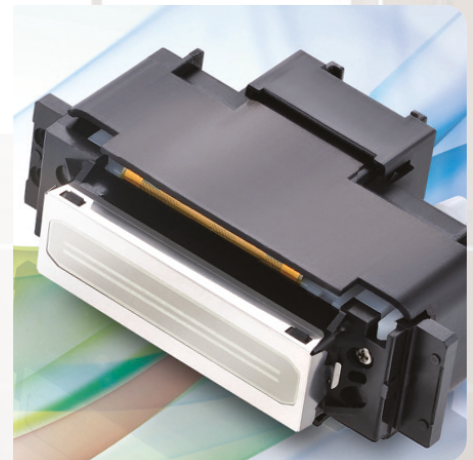
Benefit from easy, automated operation.

The compact direct-to-film printer makes garment printing easy. Its intuitive 7-inch touchscreen simplifies control, while the automatic roll feeder and cutter increase productivity, ensuring a smooth, hands-off workflow. Designed to automate and speed up your production processes, the system is perfect for busy print shops and growing businesses, delivering reliable results with minimal effort and maximum efficiency.



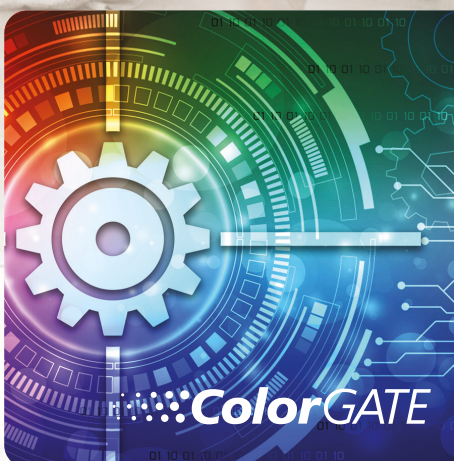
Enjoy reliable and productive performance.

You can count on the XTF D430 for reliable performance. A built-in status light provides instant updates, while dual feed technology ensures perfect media tension, preventing printhead strikes. Industrial-grade Ricoh printheads and automatic wet-cap maintenance minimise downtime, ensuring smooth, uninterrupted performance. This system delivers consistent, top-tier results, print after print, without compromise.



Integrated, end-to-end production system.

Add ColorGATE Textile Productionserver to the XTF D430 for a seamless workflow and precise colour control. Combined with a powder shaker/oven—featuring automated powder recycling and multi-stage heating—the system provides a powerful, end-to-end solution that streamlines garment production and boosts efficiency. Perfect for growing businesses aiming for top-quality, professional results.



Seamless Operation

Colour Touchscreen Operation:

The printer features an adjustable 7-inch colour touchscreen for effortless operation. Easily monitor ink levels, check parts status, access stored files, and track printing progress at a glance.

Automatic Software Updates:

Stay connected with 24/7 cloud support that ensures your printer is always up-to-date. Benefit from automatic software updates, daily status reports, and proactive technical diagnostics, all included with your purchase.

Versatile Connectivity Options:

Print conveniently from anywhere with Ethernet, WiFi, or USB connectivity options. Retrieve and reprint jobs instantly using the built-in 32GB storage, eliminating the need for a PC connection.

Intuitive Status Alerts:

Stay informed with a bright LED status indicator which is easily visible at a distance. Instantly recognise machine status; receive alerts with a red blinking light and alarm for immediate attention.

Superior Quality

High-Performance Inks:

Engineered for reliability, vibrant colours, and excellent wash fastness, the heat transfer inks undergo rigorous testing and degassing, sealed in contamination-free pouches for consistent performance.

CMYK Plus WHITE:

Effortlessly enhance your designs with ColorGATE's Dark Garment Mode, adding a white background layer for vivid graphics that stand out on coloured fabrics and resist washing and cracking.

Advanced RICOH Printheads:

Genuine RICOH drop-on-demand printheads ensure speed, precision, and durability. The industrial-grade components deliver impeccable 1200 dpi quality and an extended service life for reliable performance.

Anti-Clog Technology:

Ensure uninterrupted printing with patented wet-cap mechanism, preventing nozzle clogs—especially crucial for white ink applications. Enjoy consistent performance and peace of mind with every print job.





Automated Media Feed:

The dual feeding mechanism, with front and back rollers, maintains media flatness and tension. It reduces printhead strikes, protecting your investment and ensuring uninterrupted printing.

Intelligent Automation

Integrated Inline Cutter:

Streamline your workflow with the integrated inline cutter, automatically trimming each page or job after completion. Eliminate manual cutting tasks for increased productivity and convenience.

Smart Unwinding Technology:

Experience seamless media handling with our motorised unwinder and integrated sensors. Detecting low media levels, it coordinates with the feeding system to minimise waste and optimise efficiency.

Intelligent Multi-Zone Dryer:

Achieve flawless results on film media with the independently controlled 4-zone heater system. Rapid and precise drying of each ink layer ensures vivid colours and sharp details, regardless of ink volume or complexity.

Environmentally Assured

Ventilation Management:

The integrated exhaust fan with automatic on/off function efficiently manages ink mist and ensures consistent temperature control, crucial for enhancing machine performance and longevity in optimal operating conditions.

Adaptive Environmental Control:

Enhance printing precision with six sensors adjusting settings based on ambient conditions. The printer's software optimises jetting and drying for consistent printing excellence in any climate.

Comprehensive Support:

Stay confident in your day-to-day operations with comprehensive support for both the machine and its consumables.

ECO PASSPORT Compliant:

The water-based inks are free of toxic PVC and chemical additives. Complying with ECO PASSPORT safety standards, they support sustainable textile production, ensuring safety for adults, children, and babies alike.

XTF D430

SYSTEM SPECIFICATIONS

XTF D430 Printer

System:	Roll-fed printer with auto cutter
Printheads:	RICOH piezo-electric drop on demand printheads
Colours:	Cyan, magenta, yellow and black (4 channels), plus white (2 channels)
Resolution:	1,200 x 1,200 dpi (maximum)
Media:	423 mm DTF film
Print Width:	407.2 mm (maximum)
Ink:	Heat transfer inks, 200ml and 500ml cartridges, ECO PASSPORT certified
Operating Conditions:	Temperature: 15–32°C Relative humidity: 45–80% RH
Noise Emissions:	67 dB(A) or less
Dimensions (WxDxH):	1,295 x 798 x 713 mm
Weight:	110 kg (printer)
Power Supply:	100~240 VAC, 50–60 Hz, 4 A or more
Energy Consumption:	Approx. 90 W (standby); Maximum: 400 W (operation)
Connectivity:	Ethernet, USB Type A (standard); Wi-Fi (option)
Supported RIP Software:	ColorGATE Textile Production Server, Kothari, CadLink, Neo Stempa
Maintenance:	Temperature and Humidity Measuring, Maintenance Alerts, Auto Print Head Cleaning, Precise Ink Monitoring, Automatic Wet Cap, Automatic Head Wiper Cleaning
Certifications:	NRTL(UL 62368-1, CAN/CSA 62368-1), CB(IEC 62368-1), LVD(Low Voltage Directive (EN IEC 62368-1), FCC ClassA, ICES-003 ClassA, CE EMC(EMI): EN 55032 ClassA, EMS: EN55035, Harmonic: EN61000-3-2, Flicker: EN61000-3-3, EMF: EN 62311), VCCI ClassA
Environmental:	RoHS, REACH

Powder Shaker (option)

System:	430 mm DTF powder shaker and oven
Consumables:	Hot-Melt Powder & DTF Film
Media Width:	407.2 mm (maximum)
Power Supply:	220 V, 50-60 Hz,
Dimensions:	380 x 200 x 220 mm
Weight:	35 kg

ColorGATE Textile Productionserver

Standard Modules:	Textile PS25 Raster Cat 1 OMS (Excluding InkSaver) Adobe PDF Print Engine Linearization Assistant Container Color Replacement Color Atlas Job Backup Module Cost Calculation Module
Optional Modules: (available directly from ColorGATE)	Profiler Module X-Rite i1Pro3 Plus Automation for JDF/XML Automation for REST API Print & Cut Module Additional Hot Folders (x5)

ColorGATE System Requirements

Recommended Graphics Applications:	Photoshop/Illustrator/CorelDraw/ Action Illustrated
Compatible File Formats:	TIFF, PNG, JPG, BMP, PSB, PSD (PDF, PS, EPS are supported for non-bundled editions)
Operating System:	Windows 10 (Pro, Enterprise), Windows 11, Window Server 2016, Windows Server 2019
Processor:	CPU: Intel Core i3-2100 I or AMO Athlon II X2 340 (or better)
Memory:	4GB RAM (minimum)
Storage:	120GB free disk space (minimum)
Display Resolution:	1280 X 1024



RICOH heat transfer inks are
ECO PASSPORT certified.