

Compact mono inkjet printing system

RICOH Pro™ V20000 series

RICOH
imagine. change.



Small footprint – big productivity

Printers are always looking for new ways to produce short-run mono printing cost-effectively and that's where the Ricoh Pro™ V20000 and Ricoh Pro™ V20100 come in.

This versatile and simple to use family of systems brings competitive mono production to the critical communications, publishing, pharmaceutical, transpromotional and direct mail markets.

The compact and easy to run systems also offer a clear upgrade path for existing toner-based operations.

This is particularly the case for those in the direct mail and transpromotional sectors who are looking to replace ageing equipment, improve operational efficiency and flexibility as well as take advantage of inkjet's lower running costs.

Key features

The new Ricoh Pro™ V20000 series is fast, cost-effective and productive. The top of the range Ricoh Pro™ V20100 can print over 20 million pages a month, or 36 million metres per annum, with no reduction in print quality and on a wide range of papers – a real production deadline beater.

With a choice of two speeds – 75m/min or 150m/min, and print widths of up to 558mm, the Ricoh Pro™ V20000 mono series really are built for the low, mid-range and even high volume production.

Reliable consistent print results

It is just so simple.

Compared with other digital printing technologies, piezo ink jet with aqueous pigmented ink is the most effective way to print. The precisely controlled droplets minimise the amount of fluid used reducing costs and preventing the paper stress that is often seen with alternative inkjet solutions.

As with all inkjet systems, there are fewer requirements for manual intervention compared to toner based technology and the result is enhanced reliability, greater machine availability and lower support costs.

Print quality

High quality pigmented ink prints solid blacks. With our precise droplet control and a resolution of up to 600dpi x 1200dpi we can produce excellent text, halftones and solids.

Small footprint

With an engine footprint of less than 4.3 square metres, the Ricoh Pro™ V20000 series delivers more print per square metre than any other press in its class – increasing production floor-space availability by at least 50% compared to twin engine devices.

Models

MODEL	TYPE	SPEED (MPM)	RESOLUTION (DPI)	AMPV A4 PER MONTH
RICOH PRO™ V20000	MONO FULL DUPLEX	75	600 X 600 (MAX 600 X 1200)	UP TO 20 MILLION
RICOH PRO™ V20100	MONO FULL DUPLEX	150	600 X 600 (MAX 600 X 1200)	UP TO 40 MILLION

Applications

For high-volume users the Ricoh Pro™ V20000 series delivers exceptional quality for a wide range of applications.

Publishing

For the on-demand book and manuals sector, the Ricoh Pro™ V20000's ability to operate with inline finishing makes it a highly productive tool that offers exceptional return on investment. And the print quality is excellent – crisp blacks, and rich halftones page after page.

Variable Page Length

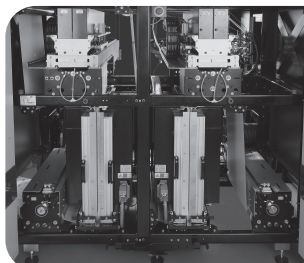
As the book-on-demand business continues to grow, having the ability to print unlimited sequences of different book formats is becoming essential. The Ricoh Pro™ V20000 family can be paired with the growing number of finishing equipment that can also support this important new feature.

Transactional and Direct Mail

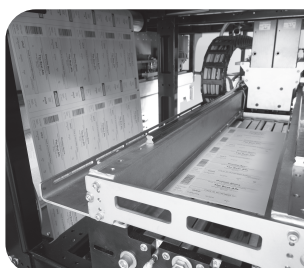
High speed data streaming gets the volume out. Monochrome inkjet printing of preprinted shells can still give the lowest cost per page of many transactional applications - an ideal replacement for ageing, toner-based devices.

Pharma leaflets

With the ability to print on light-weight certified pharma papers, the Ricoh Pro™ V20000 series provide the right platform to take advantage of the rapidly growing market for digitally printed pharmaceutical leaflets and onserts.



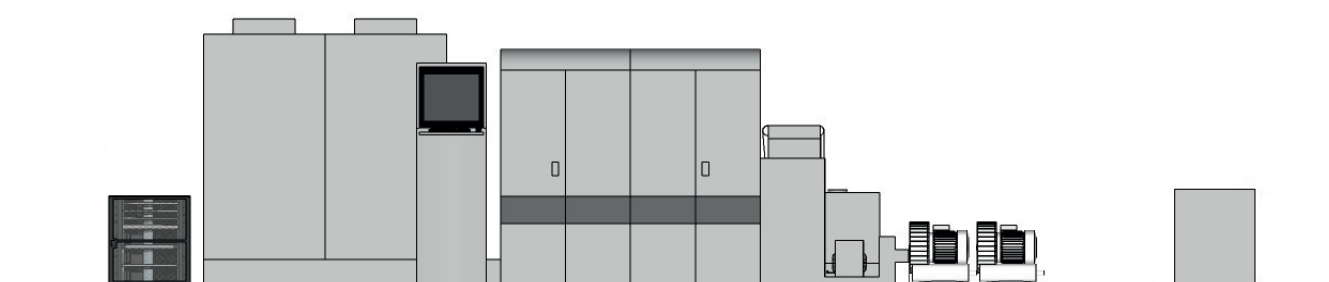
Duplex printing
in a single tower



Great print quality



Piezo ink jet heads
with aqueous
pigmented ink



RICOH Pro™ V20000 series

System specifications

Engine technology

- Piezo Drop on Demand ink jet

Printing speed

- Up to 150m/min

Print resolution

- 600 x 600dpi native (600 x 1200dpi max)

Printing

- Print width up to 558mm
- 2 up A4
- 3 up 170mm x 240mm

Data stream support

- PDF
- Postscript™
- IPDS/AFP

Media support

- 50–200 gsm
- Uncoated, Inkjet treated

Engine dimensions

- Print engine 1.93m x 2.22m (l x w)
- 18.9L ink supply unit
- Power and ink cabinets plus web guide are separate units

Weight

- Print engine 2000kg
- Power cabinet: 500kg
- Ink supply unit 160kg
- Web treatment 250kg

Power

- Compressed air – single drop at 8–10 bar, clean and dry
- Extraction – single duct from print section

Environment

- Optimal temperature range 21°C +/- 1°C (70°F +/- 1°F)
- Optimal humidity 40–60%
- Dust controlled environment preferred

Finishing

- **Specification**
3rd party finishing devices I/F specification: Type 1A/+
- **Solutions**
Multiple partners provide a variety of unwind, rewind, cut, fold, dynamic perforation, vision systems and inline processing, including a solution for books

Supplies

- Aqueous Pigment 18.9 litres
- Printhead flushing fluid

RICOH
imagine. change.

www.ricoh-europe.com

The facts and figures shown in this brochure relate to specific business cases. Individual circumstances may produce different results.
All company, brand, product and service names are the property of and are registered trademarks of their respective owners.
Copyright © 2017 Ricoh Europe PLC. All rights reserved. This brochure, its contents and/or layout may not be modified and/or adapted, copied in part or in whole and/or incorporated into other works without the prior written permission of Ricoh Europe PLC.

About Ricoh

Ricoh is a global digital technology specialist with 30 years of developing, innovating and manufacturing office image equipment, production print solutions, document management systems and IT services. It is known for the quality of its technology, the exceptional standard of its customer service and sustainable initiatives that help businesses be more productive and profitable.